

A VISION FOR OUR FUTURE



APPENDICES

- I Monomoy Civic Association
- II Monomoy Area Plan Working Group
- III Monomoy Area Plan Boundary Map
- IV Monomoy's Historic Architectural Heritage
- V Additional Resources
- VI Acknowledgments and Credits

Appendix I: Monomoy Civic Association

The MCA was established in 2012 by residents of the Monomoy community to protect and promote the mutual interests of property owners and residents in the part of Nantucket commonly called Monomoy. Monomoy includes large amounts of open space, access to the Harbor and The Creeks, and offers a quiet spacious feel with numerous unpaved roads, wetlands and scenic views.

The MCA seeks to preserve this landscape and to support area-appropriate improvements therein. The MCA is a forum through which the Monomoy community gathers to discuss matters of common interest. It strives to maintain and enhance the quality of life and quiet enjoyment of this residential neighborhood for its residents and members.

BOARD OF DIRECTORS

Evan Jones, Co-President

Franci Neely, Co-President

Laura Foley Choma

Meg and Matt Dwyer

John Kitchener

Steve Leinbach

Leo Mullen

Debbe Nicholson

Jeffrey Parker

Ken Roman

Matthew Westfall

PAST PRESIDENTS

Ted Taylor, Founding President, 2012

Peter Campanella, 2013-2018

Ken Roman, 2019-2021

To learn more about MCA, visit us on at www.mcanantucket.org and on Instagram [@monomoyneighbors](https://www.instagram.com/monomoyneighbors)

Appendix II: Monomoy Area Plan Working Group

Franci Neely	5 Salt Marsh Road	Co-Chair, Working Group
Matthew Westfall	30 Monomoy Road	Co-Chair, Working Group Chair, Services & Facilities and Climate Resilience & Adaptation Subgroups
Laura Choma	29 Monomoy Road	Chair, Circulation Subgroup
John Kitchener	27 Monomoy Road	Chair, Land Use Subgroup
Steve Leinbach	52 Monomoy Road	Chair, Open Space & Recreation Subgroup
Emily Molden	Nantucket Land Council	Chair, Natural & Cultural Resources Subgroup
Caroline Mullen	19 Brewster Road	Chair, Neighborhood Survey
John Greene	12 Chatham Road	Member
Dawn Holdgate	26 Monomoy Road	Member
Debbe Nicholson	26 Brewster Road	Member
Ed Orenstein	54 Monomoy Road	Member
Karl and Sue Ottison	170 Orange Street	Member

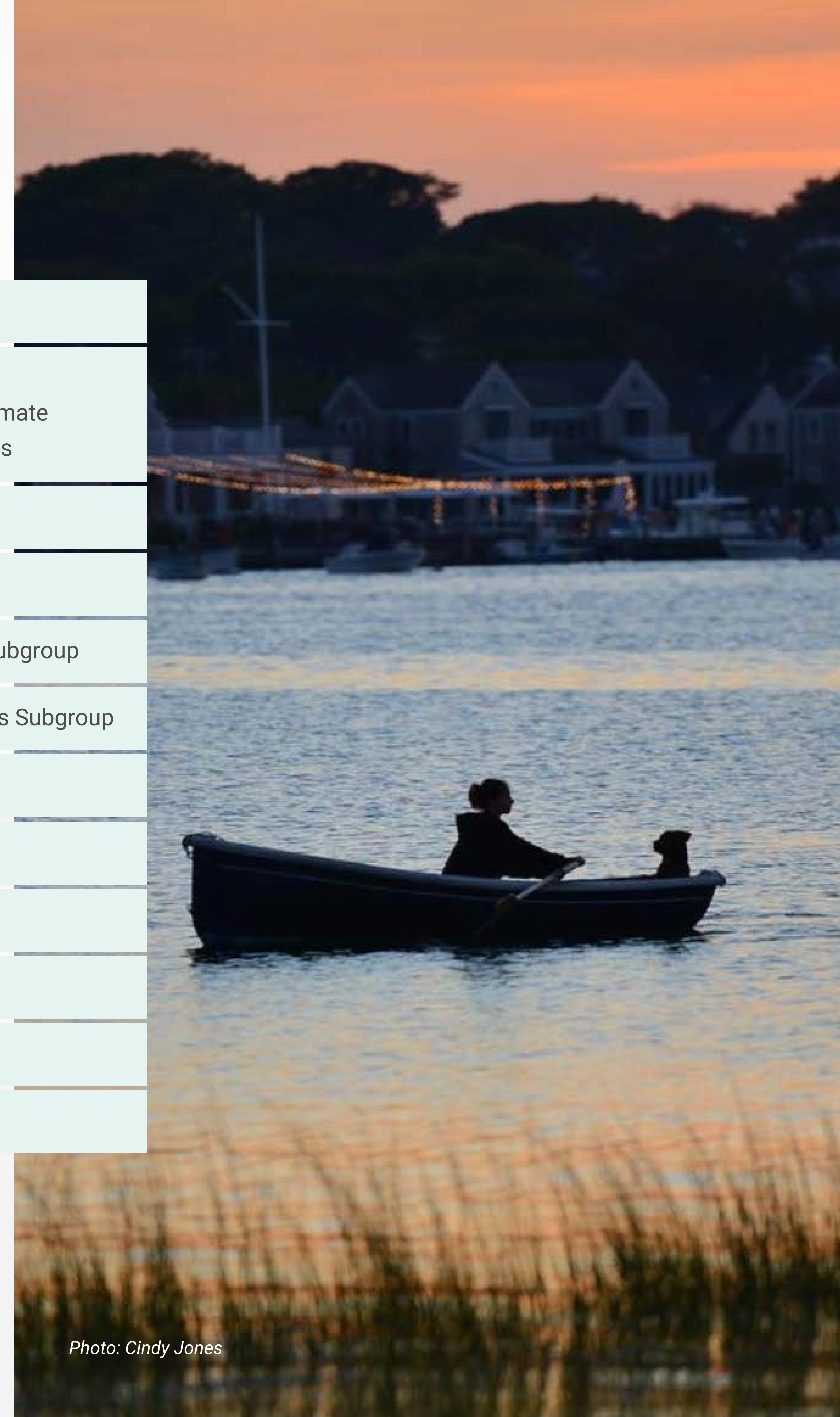
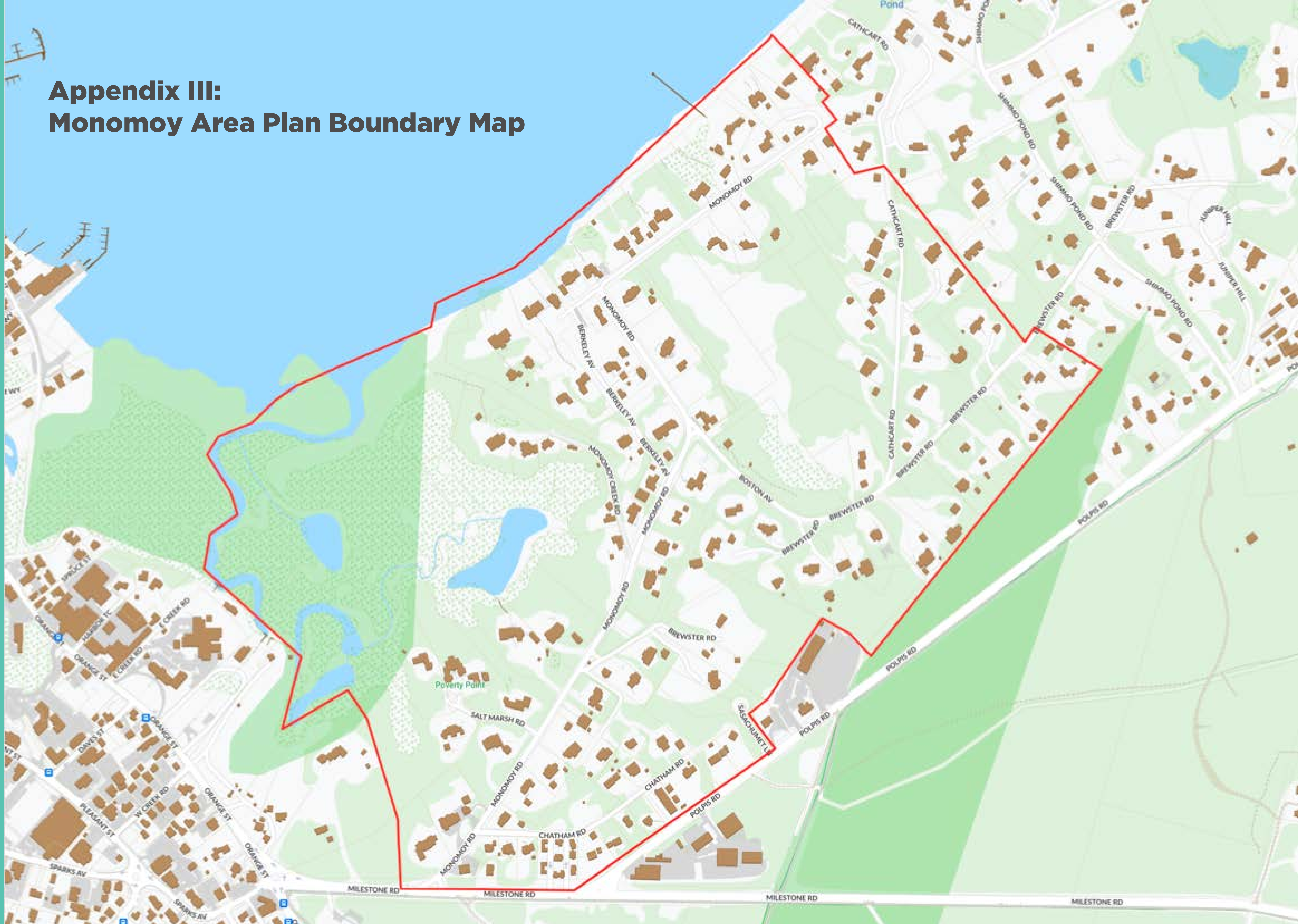


Photo: Cindy Jones

Appendix III: Monomoy Area Plan Boundary Map



Appendix IV: Monomoy's Historic Architectural Heritage

In 1955, Nantucket became one of the first two local historic districts in Massachusetts and one of the earliest local historic districts in the nation through special legislation initiated by the town and passed by the Commonwealth of Massachusetts. Originally encompassing only the Old Town and the Village of Siasconset, this local historic district was expanded in 1971 to include the entirety of the Town of Nantucket. In 1966, the Nantucket Historic District was designated a National Historic Landmark District and later expanded to cover the entire island of Nantucket.¹⁸

Located within these historic districts, Monomoy offers significant historical architectural heritage, with many homes dating to the early 20th century. Some 46 structures are listed with the Massachusetts Historical Commission, on the Massachusetts Cultural Resource Information System (MACRIS),¹⁹ though many have gone through permutations of renovation over the years as approved by the Town's Historic District Commission (HDC). Many others have been demolished over time. There are also a number of other historic structures in Monomoy dating to as early as 1909 that have not been registered and captured in the MACRIS database.

¹⁸ ¹⁹ <https://www.nantucket-ma.gov/DocumentCenter/View/37711/National-Historic-Landmark-Registration-Report-PDF>

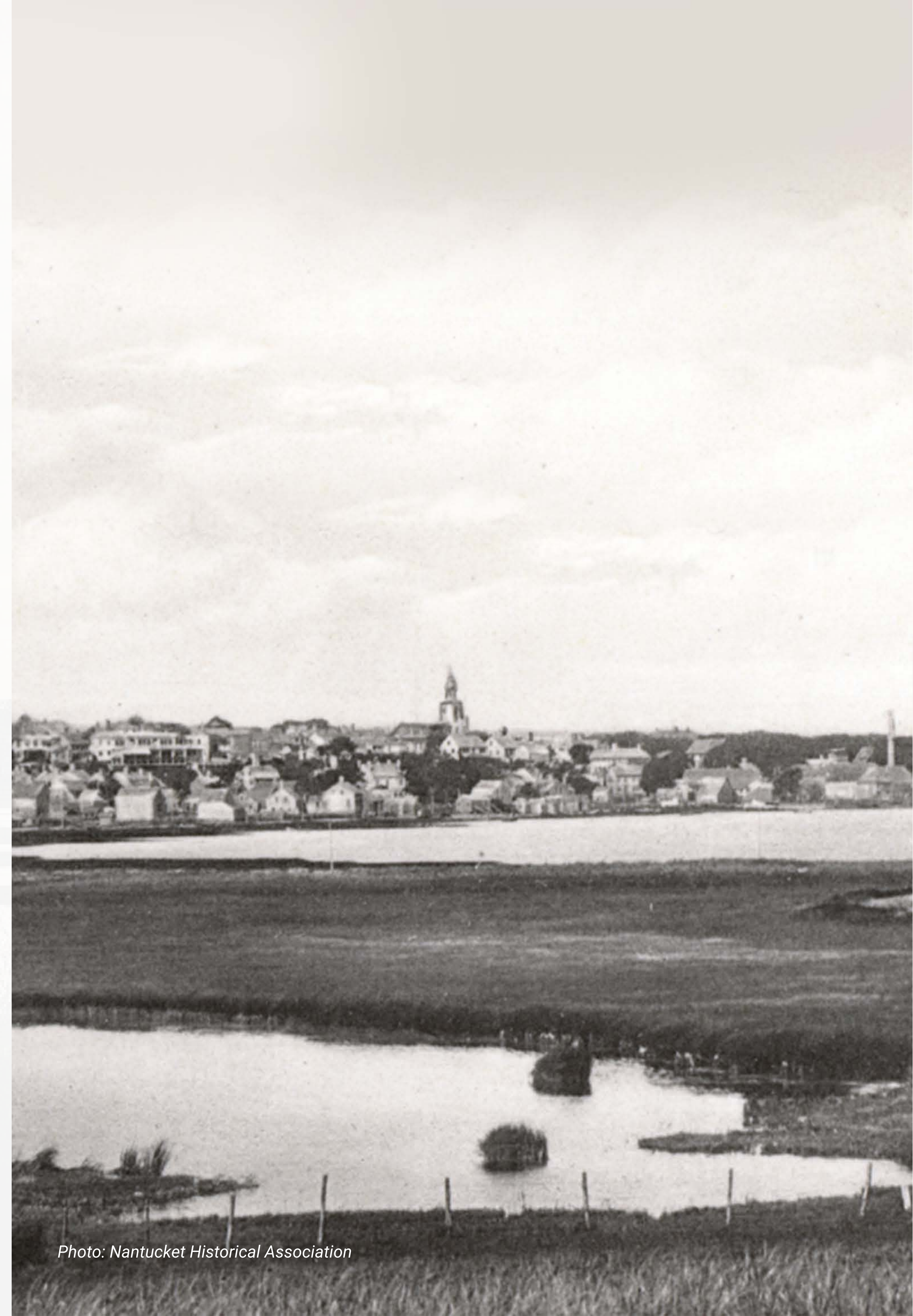


Photo: Nantucket Historical Association

Notable highlights of the MACRIS database for Monomoy include:

Monomoy Cultural Resource



"Mid Pasture" 4 Berkeley Ave
1920



"Windyway" 9 Berkeley Ave
1920



"Shawkemo" 10 Berkeley Ave
1920



"Kindertucket" 39 Monomoy Rd
1920



"Cross Creek" 42 Monomoy Rd
1928



45 Monomoy Rd
1938



"Mistover" 46 Monomoy Rd
1913



"Amanda" 50 Monomoy Rd
1913



"Morris Ernst House" 64 Monomoy Rd
1928



"The Knoll" 74 Monomoy Rd
1920

Appendix V: Additional Resources

Master Planning

Nantucket Master Plan - 2009

<https://records.nantucket-ma.gov/WebLink/ElectronicFile.aspx?docid=122938&dbid=0&repo=TownofNantucket>

Nantucket GIS Maps

<https://www.nantucket-ma.gov/151/GIS-Maps>

Nantucket Online GIS

<https://nantucketma.mapgeo.io>

Other Local Area Plans for Nantucket

<https://records.nantucket-ma.gov/WebLink/Browse.aspx?id=122939&dbid=0&repo=TownofNantucket>

Land Use

Nantucket Build-out Analysis

https://cpb-us-w2.wpmucdn.com/wp.wpi.edu/dist/e/127/files/2018/11/TMO_Final-Report-228ur7r.pdf

Natural and Cultural Resources

The Creeks

List of MA state listed endangered, threatened and species of special concern:

<https://www.mass.gov/info-details/list-of-endangered-threatened-and-special-concern-species>

Interactive Rare Species Viewer for more specific Nantucket information:

<https://www.mass.gov/info-details/rare-species-viewer>

Resilient Nantucket Design Guidelines and Toolkit:

<https://nantucket-ma.gov/1634/Resilient-Nantucket>

Protected Wetlands Within Monomoy

Town of Nantucket Wetland Protection Regulations:

<https://www.nantucket-ma.gov/DocumentCenter/View/1008/Conservation-Commission-Wetland-Regulations-2013-PDF>

Priority Habitat for State Listed Rare Species

MA Natural Heritage Endangered Species Program Regulatory Maps:

<https://www.mass.gov/service-details/regulatory-maps-priority-estimated-habitats>

MA Natural Heritage and Endangered Species Program BioMap2

<http://maps.massgis.state.ma.us/dfg/biomap2.htm>

BioMap2 - Species of Conservation Concern:

<https://www.mass.gov/doc/species-of-conservation-concern/download>

BioMap2 - Coastal Adaptation:

<https://www.mass.gov/doc/upland-habitat-to-support-coastal-adaptation/download>

The Harbor

Nantucket and Madaket Harbors Action Plan:

<https://www.nantucket-ma.gov/DocumentCenter/View/10269/Nantucket-and-Madaket-Harbors-Action-Plan-PDF>

MA Division of Marine Fisheries:

<https://www.mass.gov/orgs/division-of-marine-fisheries>

Nantucket's Best Management Practices for Fertilizer Use on Nantucket:

<https://www.nantucket-ma.gov/DocumentCenter/View/955/Best-Management-Practices-for-Landscape-Fertilizer-Use-on-Nantucket-Island?bidId=>

2015 Nantucket Eelgrass Mapping Project:

<https://www.nantucketlandcouncil.org/wp-content/uploads/2016/02/2015-Nantucket-Eelgrass-Mapping-Final-Report.pdf>

Nantucket Landscaping with Native Species Brochure:

<https://www.nantucketlandcouncil.org/wp-content/uploads/Biodiversity-Broch-Pages-In-order.pdf>

Dark Skies Initiative

Nantucket Lights:

<https://nantucketlights.org/>

Monomoy's Historic Architectural Heritage

Massachusetts Historical Commission - Massachusetts Cultural Resource Information System (MACRIS)

<https://mhc-macris.net/#/>

Open Space and Recreation

Nantucket Open Space and Recreation Plan - 2007

<https://records.nantucket-ma.gov/WebLink/ElectronicFile.aspx?docid=122963&dbid=0&repo=TownofNantucket>

Nantucket Shellfish Management Plan - 2012

<https://www.nantucket-ma.gov/DocumentCenter/View/88/Final-Shellfish-Management-Plan-PDF?bidId=>

Recreational Shellfishing

<https://www.nantucketshellfish.org/recreational-shellfishing>

Services and Facilities

Wannacomet Annual Drinking Water Quality Report - 2019

http://www.wannacomet.org/documents/2019_WaterCompany_Report_Web.pdf

Sewer District Master Plan

<https://www.nantucket-ma.gov/1536/Sewer-District-Master-Plan>

Waste Streams Guide and Map

<https://www.nantucket-ma.gov/DocumentCenter/View/27503/Waste-streams-Guide-Map-PDF>

History of Energy on Nantucket - Nantucket Energy Office

<http://www.ackenergy.org/brief-history-of-energy-on-nantucket.html>

Circulation

Nantucket Traffic Improvement Plan - 2022-2026 (draft)

<https://www.nantucket-ma.gov/DocumentCenter/View/36294/Notice-of-Public-Review-Period-Transportation-Improvement-Program-PDF>

Long-Range Transportation Plan - 2020-2040

<https://www.nantucket-ma.gov/DocumentCenter/View/24593/Long-Range-Transportation-Plan-FFY-2020-2040-PDF>

Bike Path Network

<https://www.nantucket-ma.gov/DocumentCenter/View/1223/Bike-Path-Maps?bidId=>

Climate Adaptation and Resilience

Coastal Resilience Plan

<https://www.nantucket-ma.gov/2030/Coastal-Resilience-Plan>

NOAA Sea Level Rise Viewer

<https://coast.noaa.gov/slr/>

<https://coast.noaa.gov/slr/#/layer/sce/2/-7802012.036114372/5053439.277331307/16/satellite/104/0.8/2050/inter/midAccretion>

Erosion Hazard Maps

<https://www.nantucket-ma.gov/1977/FEMA-Coastal-Erosion-Hazard-Map>

<https://fema.maps.arcgis.com/apps/webappviewer/index.html?id=a4aa86031a3a40be9d453d781ff210b3>

Net Zero

Massachusetts Climate Action

[Net Zero Planning for Communities](#)

Metropolitan Area Planning Council (regional planning agency serving 101 cities and towns of Metropolitan Boston)

[Net Zero Playbook](#)

Cape Light Compact

[How You Can help you Community Become Net Zero](#)

Best Practice: Cambridge, MA

[Net Zero Task Force](#)

Best Practice: Arlington, MA

[Net Zero Action Plan](#)

National Grid

[Net Zero by 2050](#)

Appendix VI: Acknowledgments and Credits

A special thanks to the many people who have generously given their time, expertise and support to the formulation of the Monomoy Area Plan, including Evan Jones, co-President of the MCA, Leo Mullen, and many others who helped bring this document to completion. We are grateful for the guidance and support received from Andrew Vorce, Director of Planning, and the staff of the Nantucket Planning & Economic Development Commission, and from Vincent Murphy, Coastal Resilience Coordinator.

As we have drawn heavily on the studies, plans and related planning documents found online at the Town of Nantucket's website, as well as the Town's online GIS system, our thanks as well to the many departments who are working on behalf of the island of Nantucket. Having such resources available on demand has allowed us to anchor our local area planning exercise on solid data and robust research, which in turn has empowered our local planning process.

The Monomoy Area Plan would not be what it is without the wonderful photography generously contributed to the project. Our sincere thanks to Neil Foley of the Nantucket Conservation Foundation and Cindy Jones for the incredible images of wildlife and natural resources found throughout this document, and to Emily Molden of the Nantucket Land Council for sharing the beautiful aerial drone shots of Monomoy and The Creeks. Our special thanks as well to Caroline Mullen and Matthew Westfall for their terrific images of Monomoy and visual coverage of the many issues tackled in this local area planning exercise. All ownership and copyright of all photography remain with the individual contributors and /or their organizations.

We also would like to thank the Nantucket Historical Association for guiding us to historical resources related to Monomoy in their library.

Finally, we are deeply indebted to Anthony Santos and Charmin Cauilan of Amplified eSolutions for the graphic design and layout of our Monomoy Area Plan.

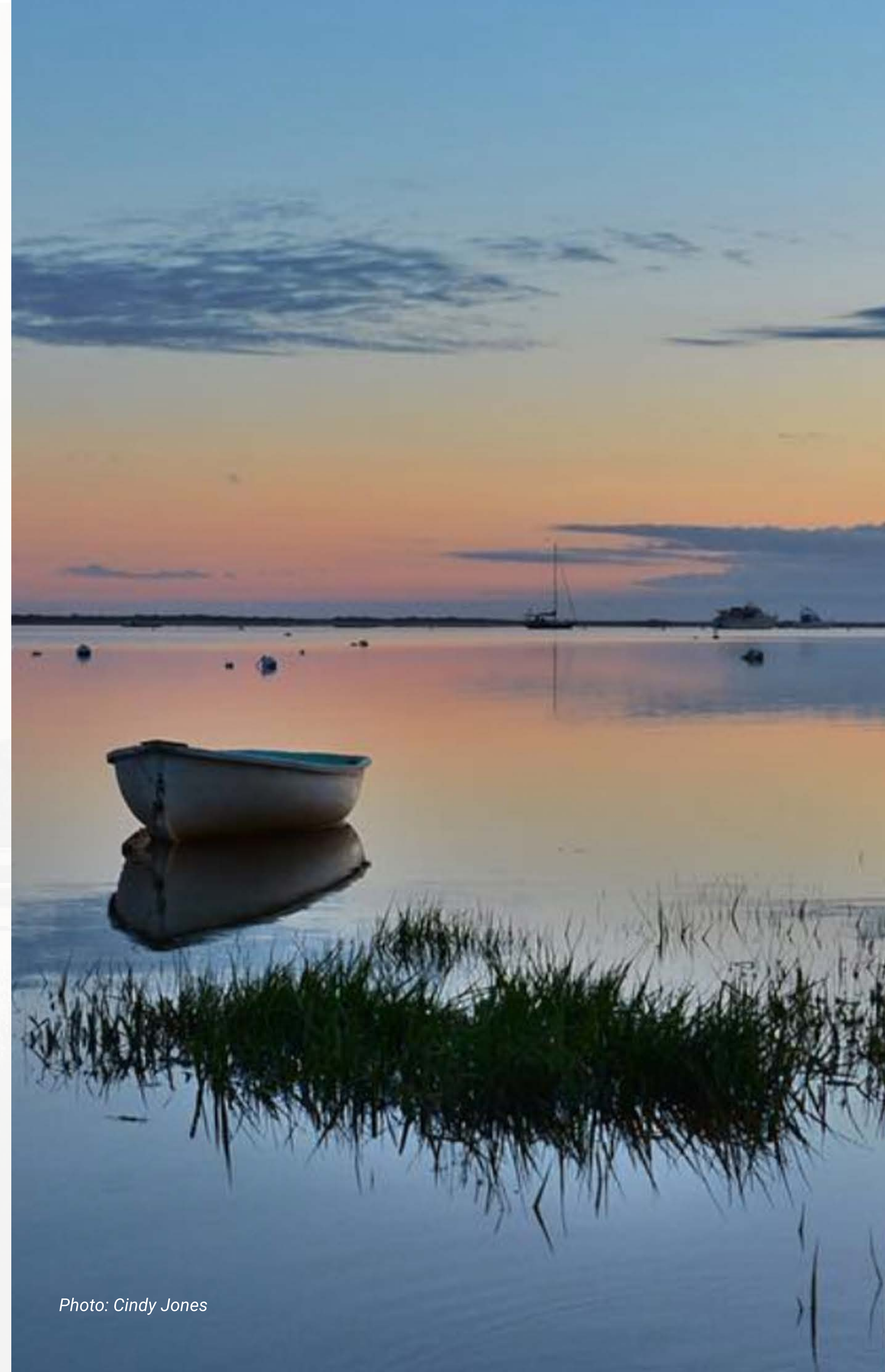


Photo: Cindy Jones